

ALI-JAMB

Aluminium Garage Door Jambes

INSTALLATION GUIDE

NZ Sales & Support:

Phone: 027 248 3677

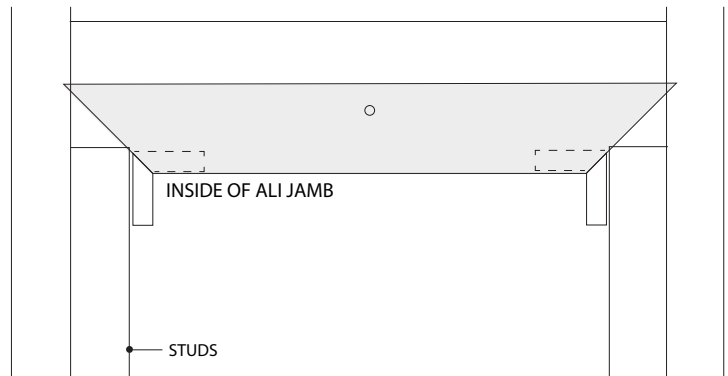
Email: alijambnz@gmail.com

www.alijamb.co.nz

Step 1 - Position Head Profile

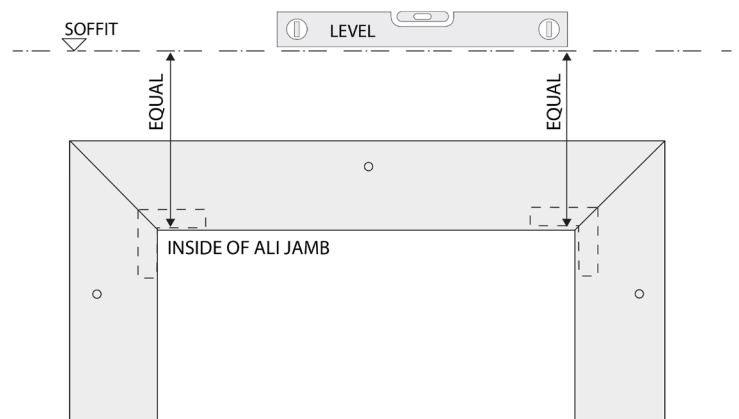
- Install corner cleats into head profile.
- Hold head profile up to lintel and install central face screw.
- Measure from the concrete rebate to the underside of lintel, Subtract 20mm and cut bottom of legs to length and angle to suit the rebate.

Or if no concrete rebate cut the bottom of the legs to the required length and angle.



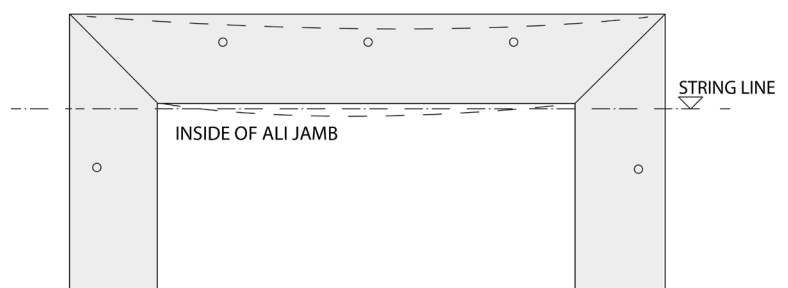
Step 2 - Fix Side Profiles

- Slide side profiles over corner cleat.
- Level each side and install face screws to side profiles.



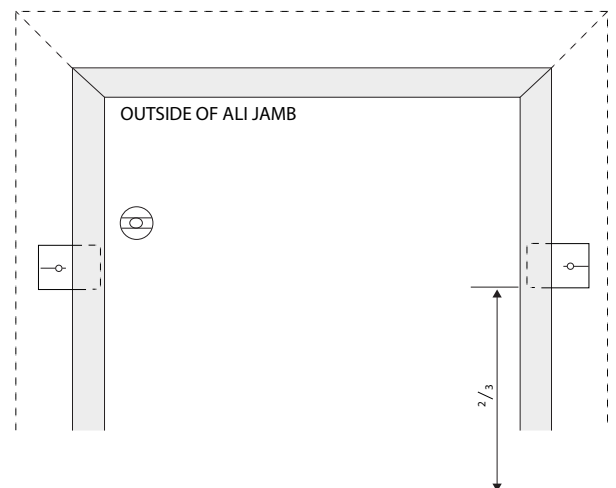
Step 3 - Plum Head Profile

- Remove central screw and allow head profile to sag.
- Level head profile to string line and install face screws to head.



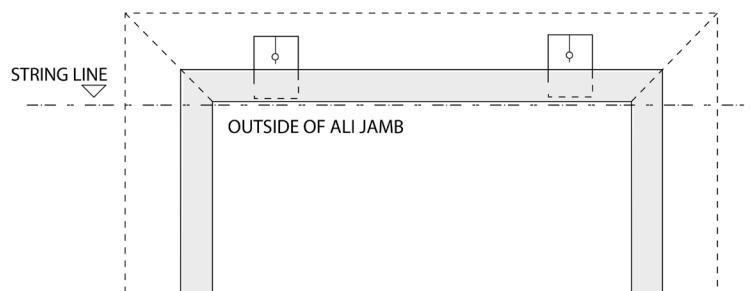
Step 4 - Install Jamb Clips

- A. Check for plumb outside edge with level and install 2 - 3 clips up each side. No higher than two thirds up sides. Refer details on Step 6 for clip installation position.

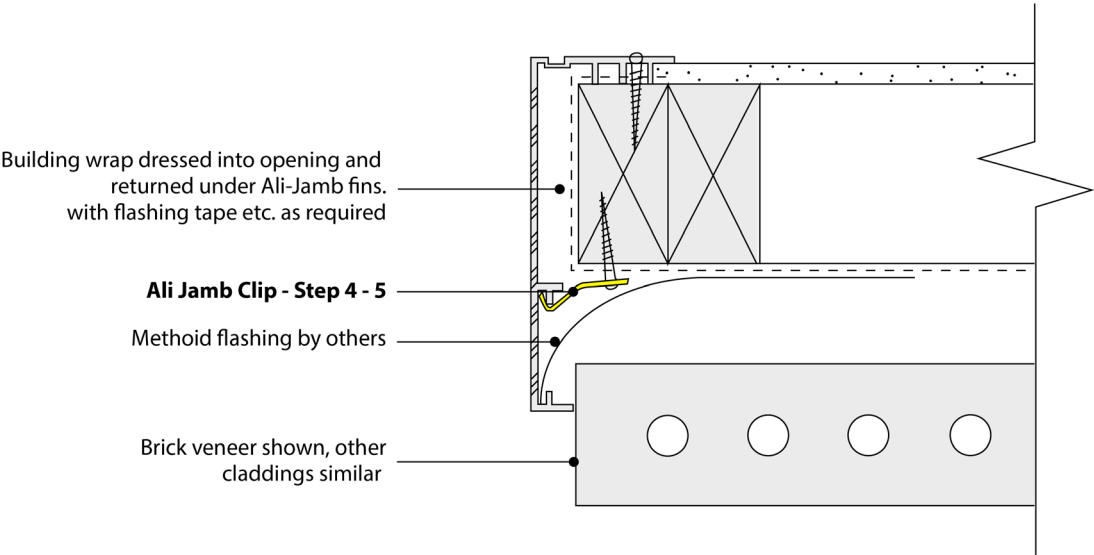


Step 5 - Install Head Clips

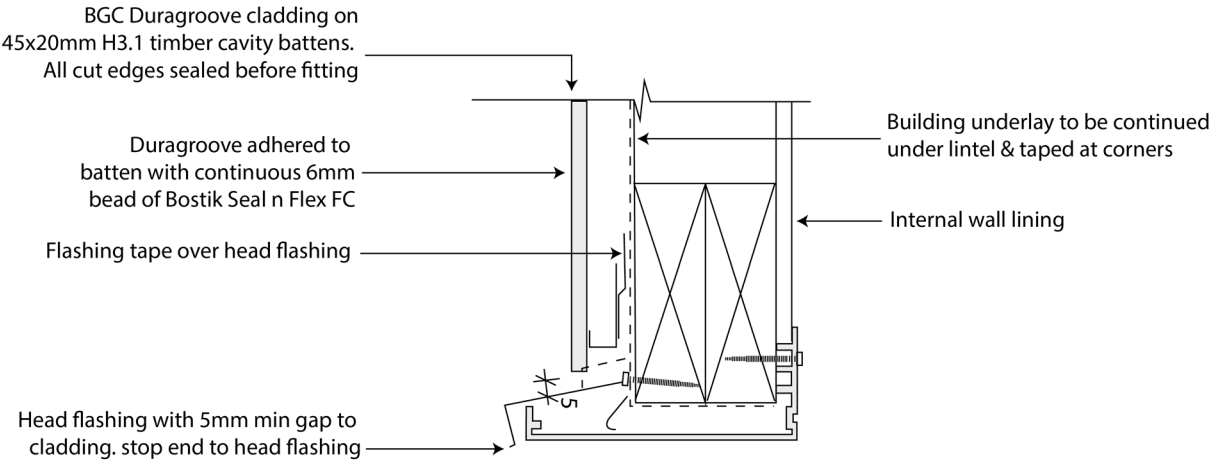
- A. Run string line along and across underside of head profile. Install head clips. 2-4 clips depending on width



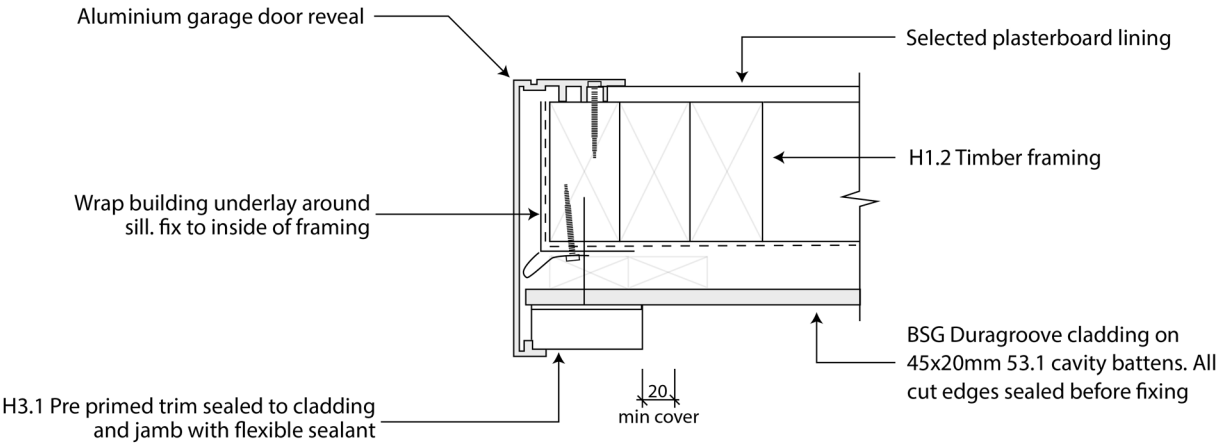
Side Jamb Detail



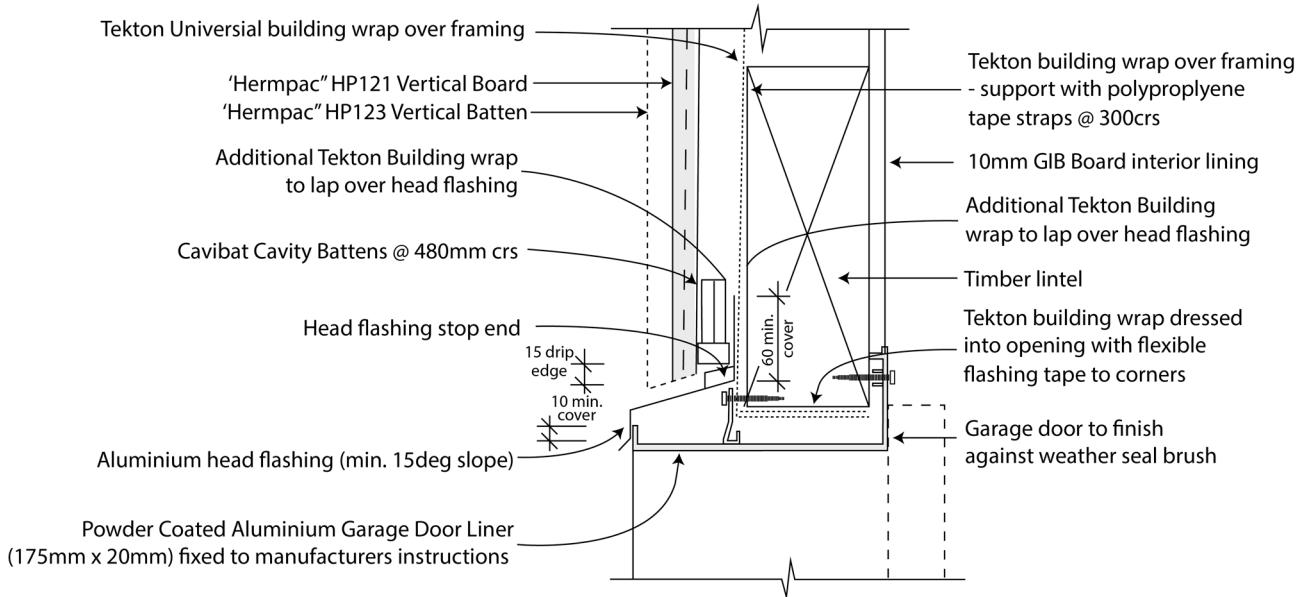
Head Jamb Detail



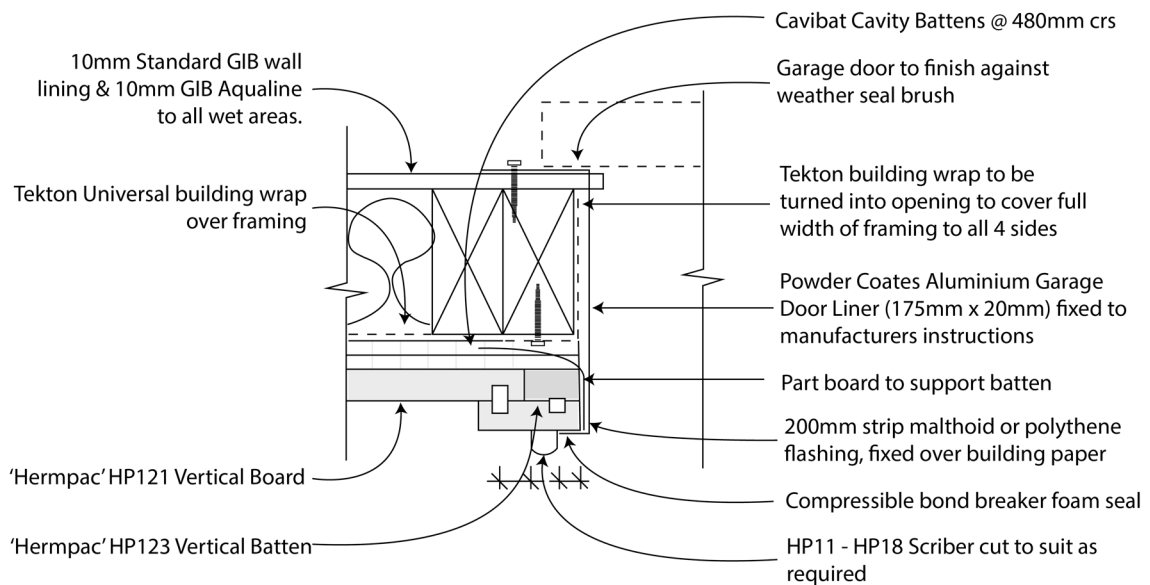
Side Jamb Detail



Head Jamb Detail



Side Jamb Detail



Head Jamb Detail

