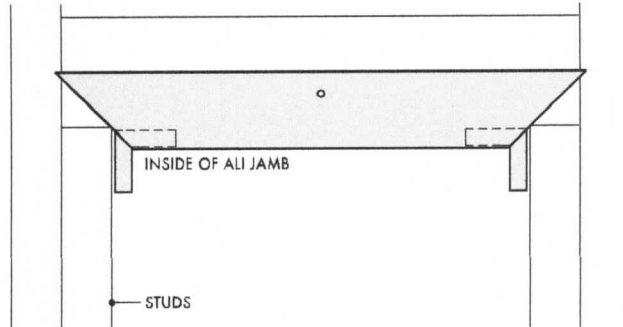


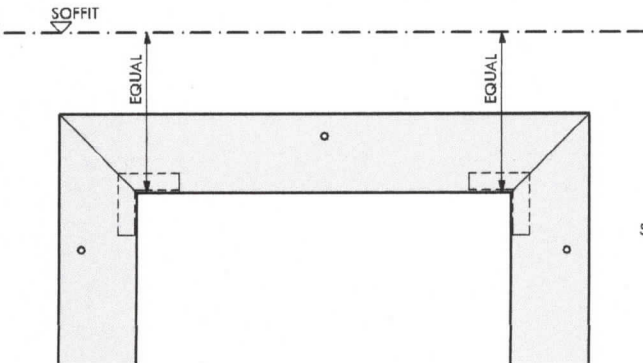
ALI JAMB INSTALLATION INSTRUCTIONS

ALI-JAMB LTD
The Aluminium Garage Door Liners

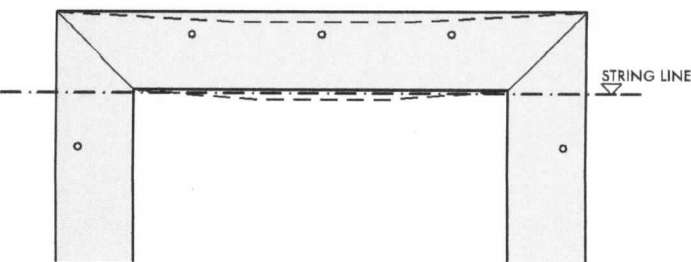
MEASURE FROM CONCRETE TO UNDERSIDE OF LINTEL. SUBTRACT 20mm. CUT LEGS TO LENGTH



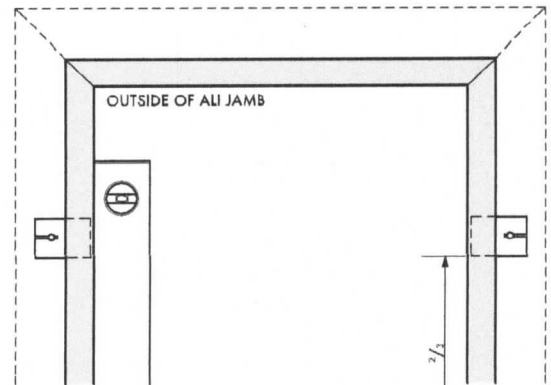
1 POSITION HEAD PROFILE
HOLD HEAD PROFILE UP TO LINTEL AND INSTALL CENTRAL FACE SCREW



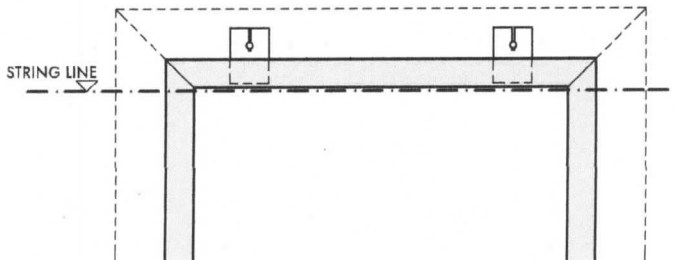
2 FIX SIDE PROFILES
SLIDE SIDE PROFILES OVER CORNER CLEATS
LEVEL EACH SIDE WITH SOFFIT PLUMB AND INSTALL FACE SCREWS TO SIDE PROFILES



3 PLUMB HEAD PROFILE
REMOVE CENTRAL SCREW AND ALLOW HEAD PROFILE TO SAG.
LEVEL HEAD PROFILE TO STRING LINE AND INSTALL FACE SCREWS TO HEAD



4 INSTALL JAMB CLIPS
CHECK FOR PLUMB OUTSIDE EDGE WITH LEVEL AND INSTALL 2 TO 3 CLIPS UP EACH SIDE, NO HIGHER THAN TWO THIRDS UP SIDES. REFER DETAIL 6 FOR CLIP INSTALLATION POSITION

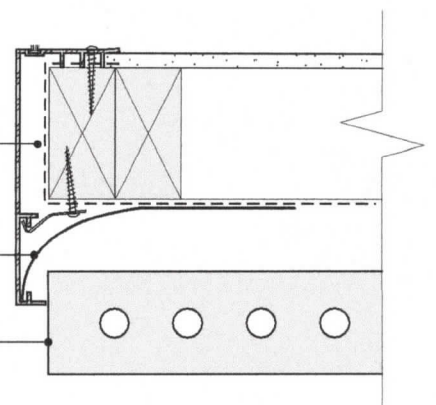


5 INSTALL HEAD CLIPS
RUN STRING LINE ALONG AND ACROSS UNDERSIDE OF HEAD PROFILE. INSTALL HEAD CLIPS

BUILDING WRAP DRESSED INTO OPENING AND RETURNED UNDER ALI JAMB FINES WITH FLASHING TAPE ETC. AS REQUIRED

MELTHOID FLASHING BY OTHERS

BRICK VENEER SHOWN, OTHER CLADDINGS SIMILAR



6 ALI JAMB, JAMB DETAIL
SCALE 1:5